

Egismos *DATASHEET*

406nm Compact Laser Diode Modules Key features

Visible light $\lambda = 405\text{nm}$
 Output powers = 20mW
 Package type = 5.6mm Φ
 High reliability

Applications

Blu-ray Disc/HD DVD drive
 Other new application



AS-D6-7-405-20

Laser Diode Solutions

AS-D6-7-405-20 is a MOCVD grown 405nm band InGaAs laser diode. It's an attractive light source, with a typical light output power of CW 20mW. It's suitable for use as high reliability laser diode in a wide range of industrial application.

Electrical and Optical Characteristics at $T_c = 25^\circ\text{C}$

Item	Symbols	Min.	Typ.	Max.	Unit	Condition
Optical Output Power	Po	-	20	-	mW	-
Threshold Current	Ith	-	26	50	mA	Po=10mW
Operating Current	Iop	-	35	60	mA	Po=10mW
Differential Efficiency	η	0.7	1.1	-	mW/mA	Po=10mW
Operating Voltage	Vop	-	4.8	5.6	V	Po=10mW
Peak Wavelength	λ_p	395	405	415	nm	Po=10mW
Monitoring Output Current	Im	0.1	0.2	0.5	mA	Po=10mW
Beam Divergence	$\Theta_{//}$	6.0	8.5	12.0	deg	Po=10mW
	Θ_{\perp}	16	19	23	deg	Po=10mW
Beam Angle	$\Delta\Theta_{//}$	-2	-	+2	deg	Po=10mW
	$\Delta\Theta_{\perp}$	-2	-	+2	deg	Po=10mW

* Angle at 50% peak intensity (full-width at half-maximum)

* Parallel to the junction plane (X-Z plane)

Perpendicular to the junction plane (Y-Z plane)

Egismos

<http://www.egismos.com>

TEL: +1-888-3481454

FAX: +1-604-4339864

E-Mail: sales@egismos.com

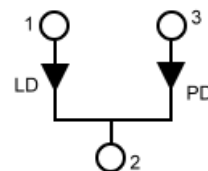
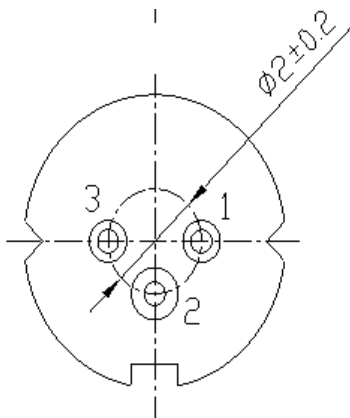
Egismos *DATASHEET*

Absolute Maximum Rating at Tc=25°C

Items	Symbols	Values	Unit
Optical Output Power	Po	20	mW
Laser Diode Reverse Voltage	V	2	V
Operating Temperature	To	-0~+75	°C
Storage Temperature	Ts	-40~+85	°C

Electrical Connection

Package Type



M type(M,R)

Egismos

<http://www.egismos.com>

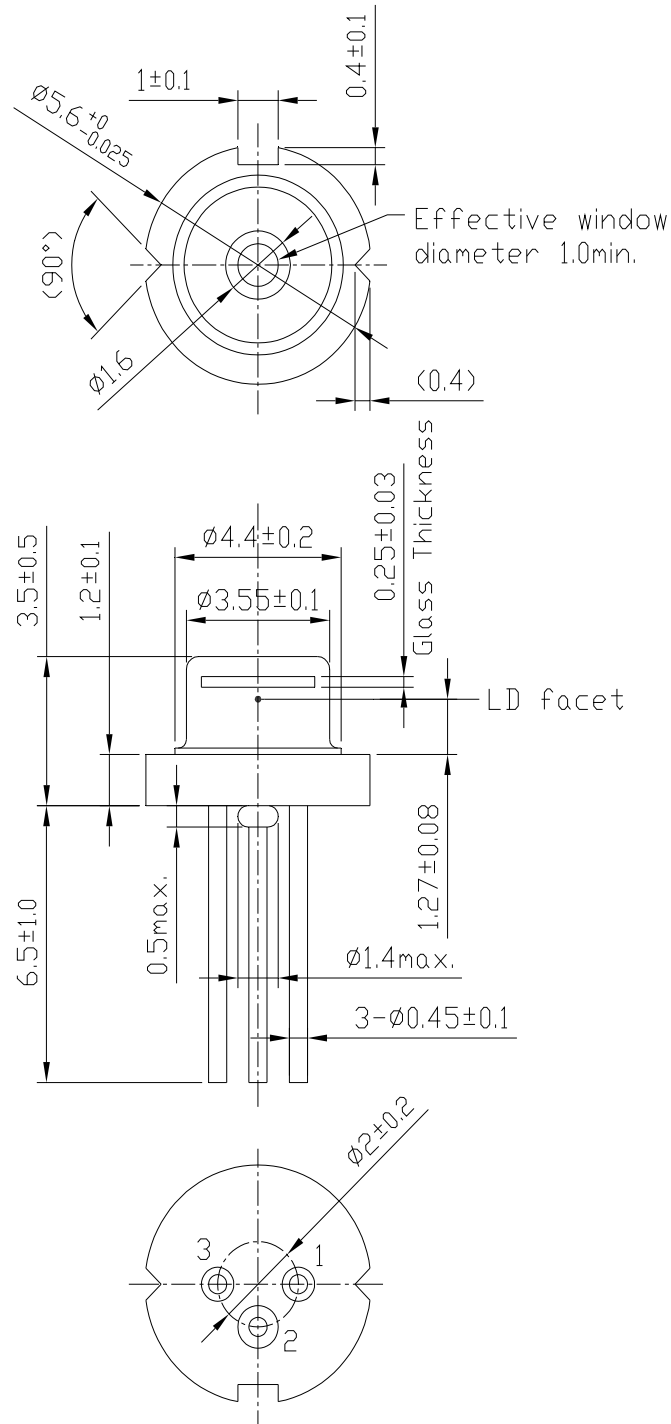
TEL:+1-888-3481454

FAX:+1-604-4339864

E-Mail:sales@eGismos.com

Egismos DATASHEET

Laser Diode Package Drawing



Egismos

<http://www.egismos.com>

TEL:+1-888-3481454

FAX:+1-604-4339864

E-Mail:sales@eGismos.com